

BRUNSWICK

BROKERS
COMMERCIAL REAL ESTATE

Brick & Beam Office Space with Modern Vibe

FOR LEASE CENTERBEAM PLACE 14 KING STREET

Saint John | NB

Stephanie Turner



14 King Street | Saint John, NB
Stephanie Turner



Property Highlights

BASE RENT
\$14.00 psf

A much sought-after location for any company seeking an unparalleled work environment of beauty and efficiency. CenterBeam Place comprises a city block of heritage buildings built between 1878-1880, situated at the edge of Saint John Harbour.

These 'brick & beam style' office suites are demisable, offer plenty of large windows and natural light, as well as private elevator access.



**UPTOWN
LOCATION**



**BOMA BEST
CERTIFIED SILVER**



**PARKING
NEARBY**



**ELEVATOR
ACCESS**



**TRANSIT
ACCESSIBLE**

BRUNSWICK
BROKERS

12 Smythe St, Suite 104
Saint John, NB
E2L 5G5

Stephanie Turner
(506) 333-3442
sturner@bbrokers.ca
www.bbrokers.ca



14 King Street | Saint John, NB
Stephanie Turner



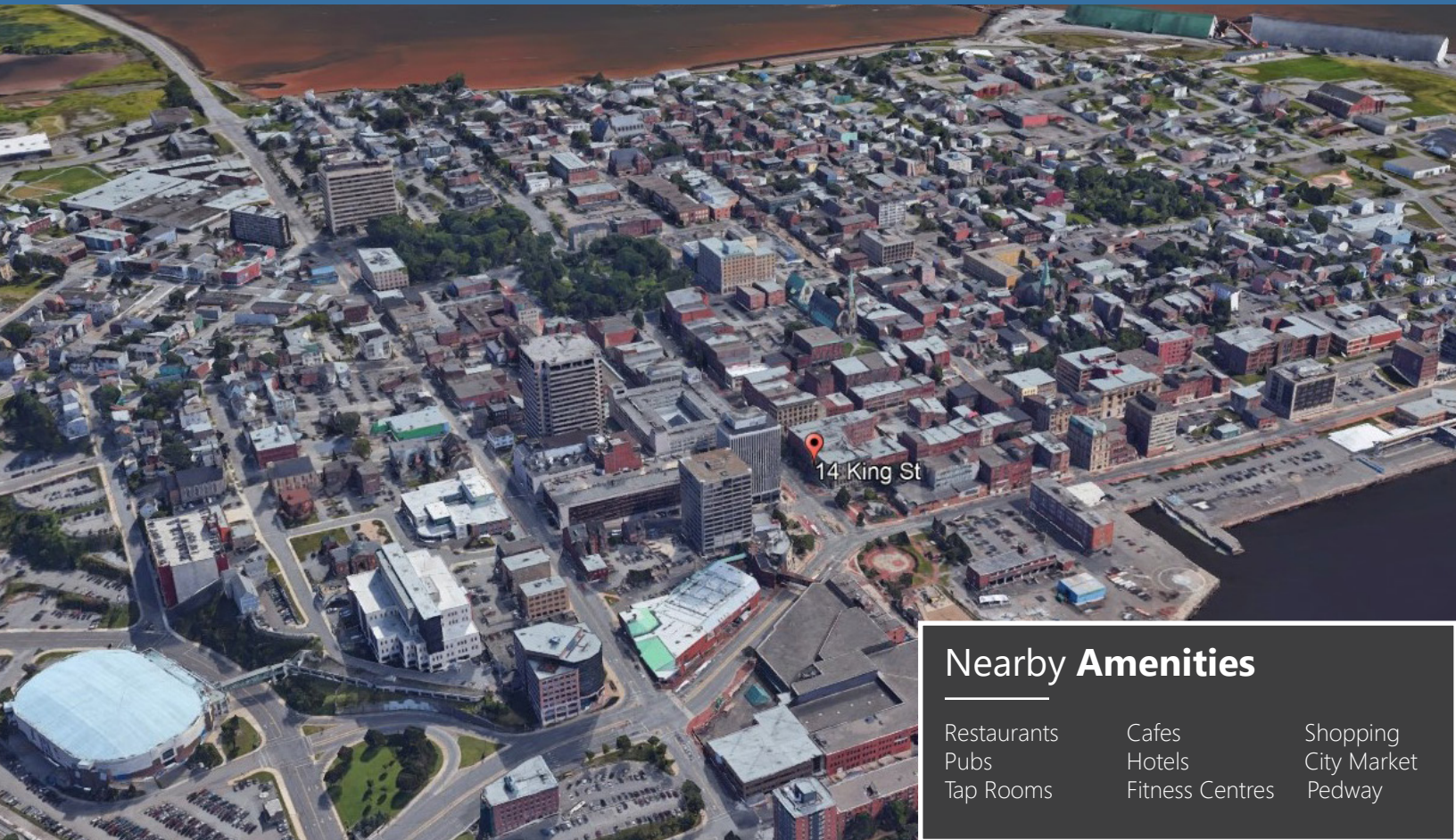
Property Details

AVAILABLE
IMMEDIATELY

| | |
|-------------------------------------|--|
| NUMBER OF FLOORS | Four |
| BUILDING SIZE | 123,734 sf |
| SIZES AVAILABLE | Suite 220: 6,633 sf Suite 300: 9,797 sf Suite 330: 8,381 sf Suite 430: 5,658 sf |
| MAX CONTIGUOUS SPACE | 9,797 sf |
| MIN DIVISIBLE SPACE | 5,658 sf |
| PARKING | Public and private lots nearby |
| BOMA BEST LEVEL | Boma Best Certified Silver |
| TENANT IMPROVEMENT ALLOWANCE | To be negotiated based on tenant, terms & conditions |



14 King Street | Saint John, NB
Stephanie Turner



Nearby Amenities

Restaurants
Pubs
Tap Rooms

Cafes
Hotels
Fitness Centres

Shopping
City Market
Pedway

Saint John

| | |
|-----------------------------------|----------|
| 2021 POPULATION | 130,613 |
| POPULATION INCREASE (2016 - 2021) | 3.5 |
| MEDIAN AGE | 44.4 |
| AVERAGE HOUSEHOLD INCOME | \$63,737 |



Property Photos

14 King Street | Saint John, NB
Stephanie Turner



BRUNSWICK
BROKERS

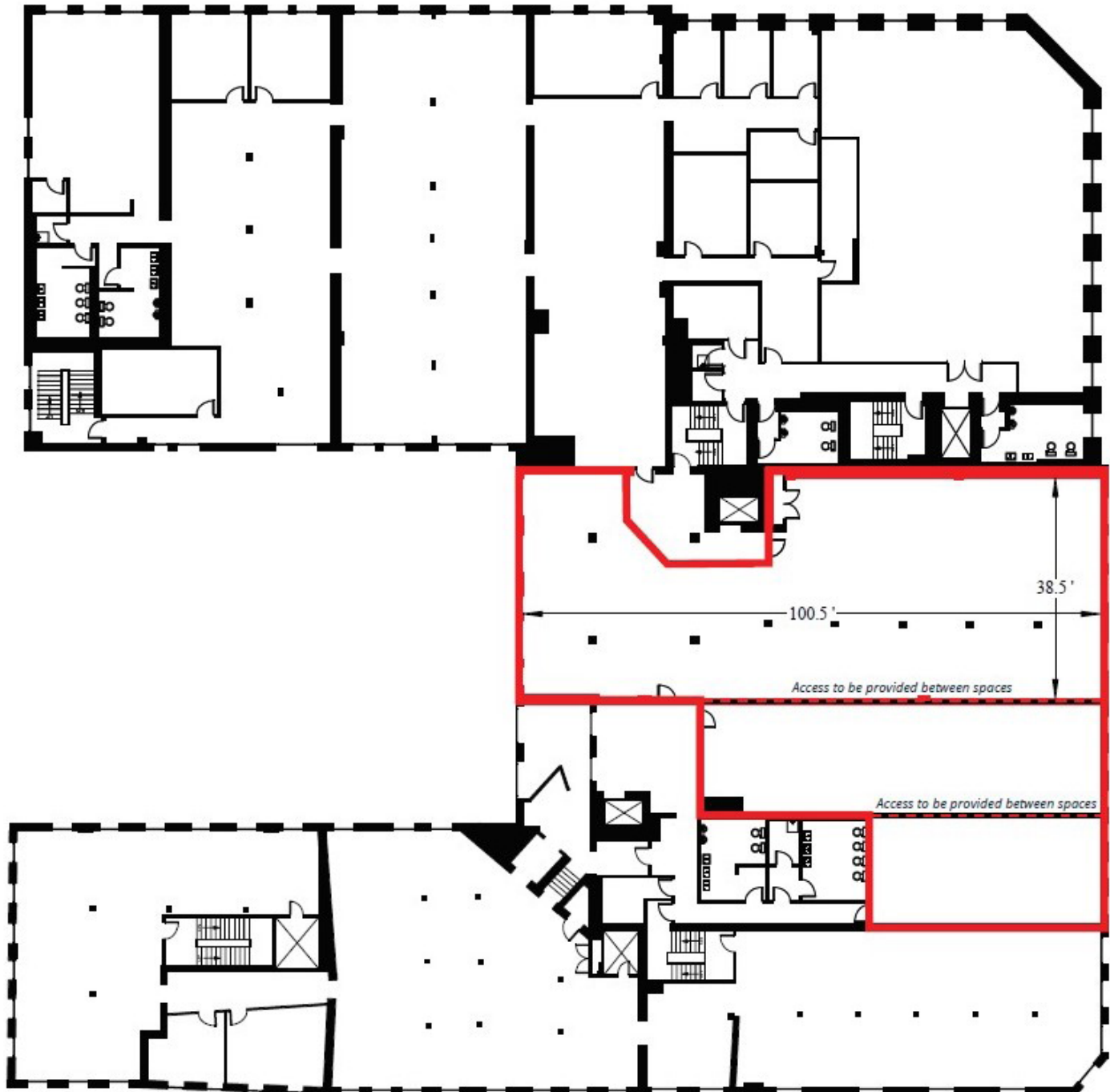
12 Smythe St, Suite 104
Saint John, NB
E2L 5G5

Stephanie Turner
(506) 333-3442
sturner@bbrokers.ca
www.bbrokers.ca



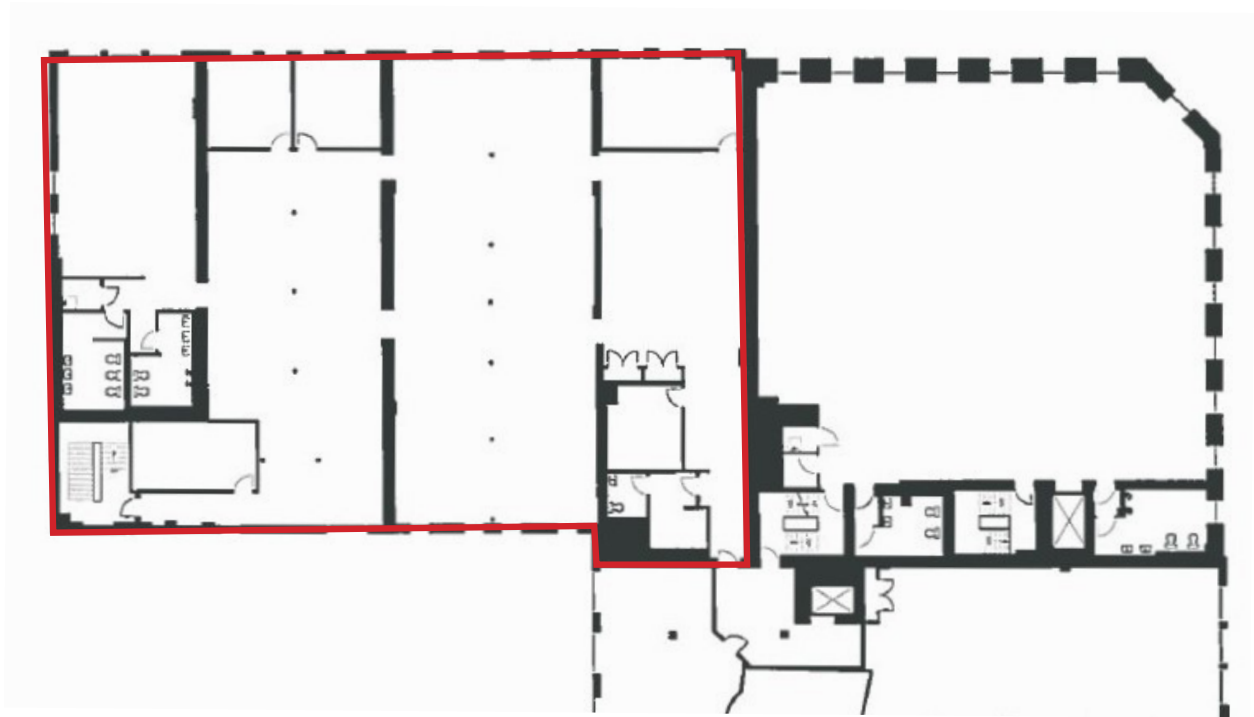
SUITE 220
6,633 sf

14 King Street | Saint John, NB
Stephanie Turner



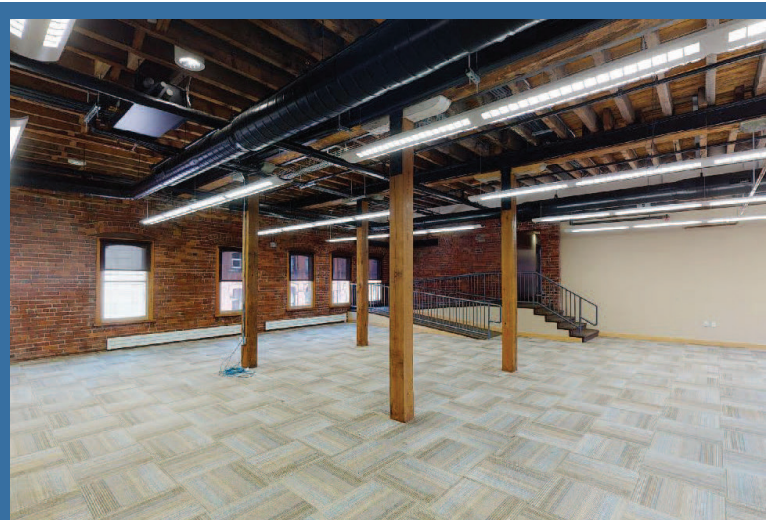
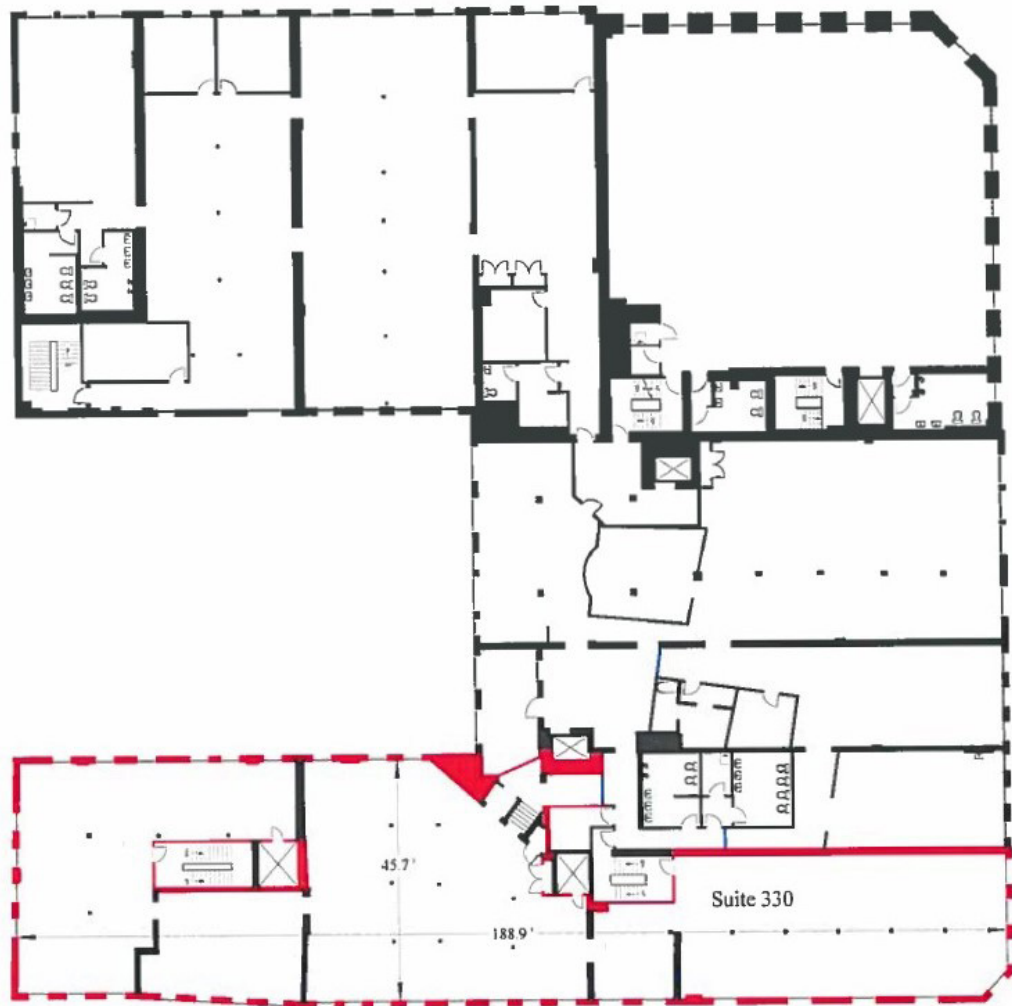
SUITE 300
9,797 sf

14 King Street | Saint John, NB
Stephanie Turner



SUITE 330
8,381 sf

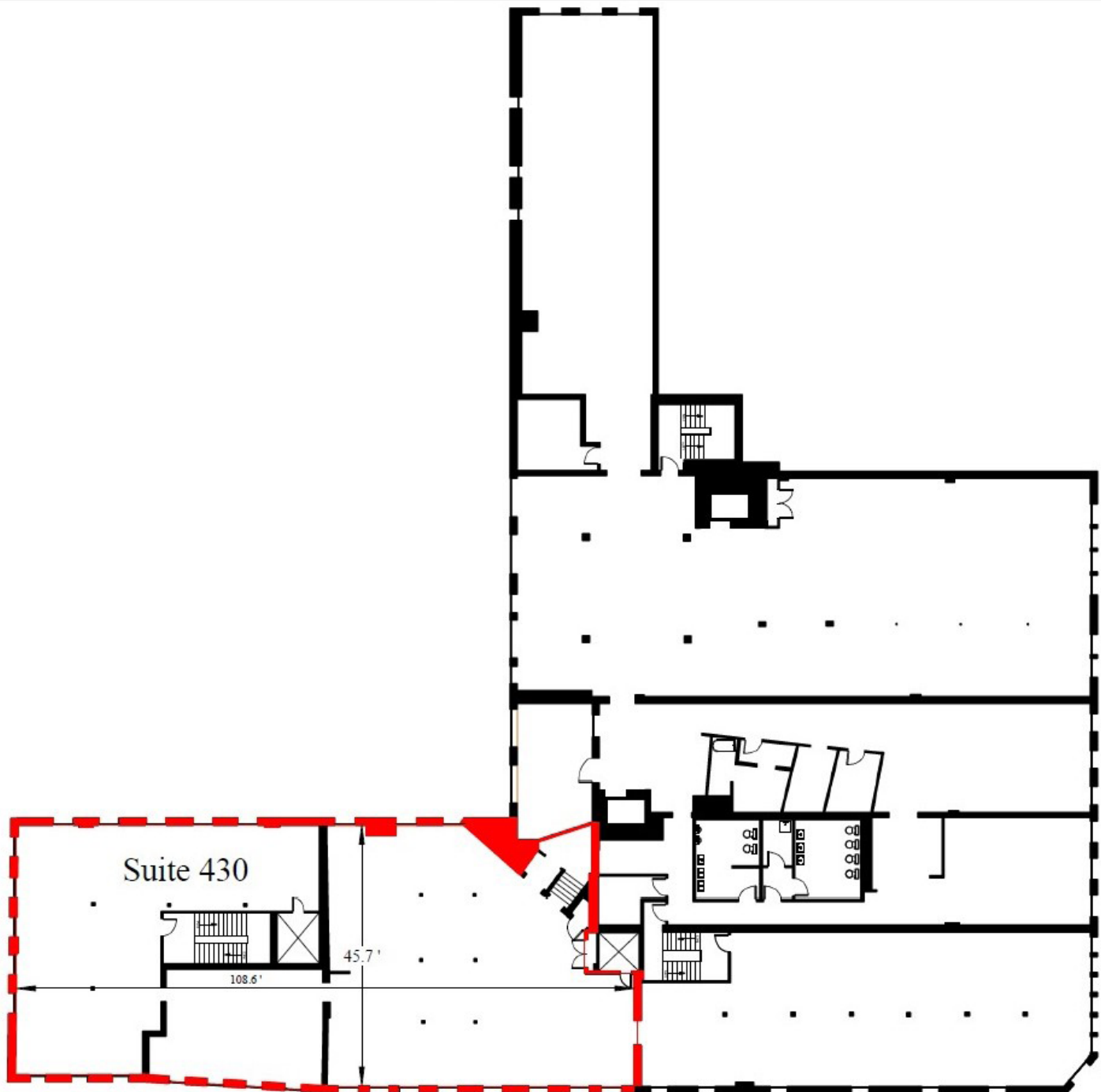
14 King Street | Saint John, NB
Stephanie Turner



SUITE 430

5,658 sf

14 King Street | Saint John, NB
Stephanie Turner





14 King Street | Saint John, NB

Stephanie Turner
(506) 333-3442
sturner@bbrokers.ca

12 Smythe Street, Suite 104
Saint John, NB
E2L 5G5

bbrokers.ca

BRUNSWICK
BROKERS

Brunswick Brokers Limited (Brunswick Brokers) and its agents and affiliates do not warrant, represent or guarantee the accuracy, completeness, validity or non-infringement of the information provided herein. Parties interested in a property should conduct their own independent investigations to determine the suitability of the property for their intended use and are strongly urged to discuss the property with their professional advisors. Brunswick Brokers assumes no liability or responsibility for any errors or omissions occurring in the information provided herein and shall not be liable for any direct, incidental, consequential, indirect or punitive damages arising out of the use of such information.